



# **Hot Air Lances**

***High Performance Pavement Preparation Equipment***



**High Velocity, High Temperature Hot Air**  
**Proudly Manufactured in the U.S.A. 800-776-5830**



*Proper preparation of pavement cracks and joints is essential to the success of crack sealing projects. Cracks and joints must be clean and dry prior to sealant installation and you can quickly accomplish this by using one of our high velocity high temperature Hot Air Lances. Contact us today at **800-776-5830**.*

## **Pavement Crack, Joint and Pothole Preparation**



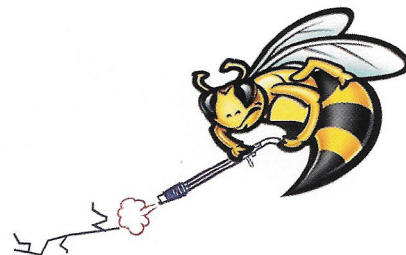
### **FACTS:**

- Crack sealants will not stick to wet and dirty asphalt or concrete pavements.
- Cleaning, drying and heating the pavement defect improves the adhesion of crack sealants.
- The Strategic Highway Research Program (SHRP) recommends treating cracks with a Hot Air Lance prior to sealant installation.
- A clean dry crack is your first step in ensuring successful crack repair. LAB Hot Air Lances can help you achieve this goal by quickly eliminating moisture and debris in pavement cracks in one quick step.

### **Benefits of LAB Hot Air Lances:**

#### **Preparation is key!**

- Maximizes the adhesion of any crack sealant
- Will increase productivity and decrease job delays by allowing crews to work after a recent rainfall, morning dew or cool temperatures
- Eliminates other costly preparation tools, routers, blowers, wire brush machines, etc.
- Easy to operate and maneuver, lightweight yet durable
- Constructed with high strength steel and stainless steel tubing
- Precision engineered to exacting standards for safe reliable operation
- Adjustable temperature and air volume controls
- Patented combustion system
- Cracks are dried and quickly cleaned
- Built with pride in the U.S.A.



### **How Does A Hot Air Lance Work?**

LAB heat lances burn vapor propane and mix it with super heated compressed air in a specially designed and patented combustion chamber. High velocity Hot Air is produced and directed towards the pavement surface. Since no flame touches the pavement, you can fill cracks immediately behind the lance operator without the worry of burning or charring the pavement surface.

### **HeatLances.com Which lance is right for me?**

The major difference is the volume of air supply. What size is your compressor? Use chart for reference:

<u>CFM</u>	<u>BEST PERFORMANCE</u>
60-100 .....	HotShot
100-150 .....	Classic Model B
150 + .....	Blaster Model C

## Which Model Suits You?

[www.HeatLances.com](http://www.HeatLances.com)

In order to produce enough velocity you must have a good supply of compressed air to effectively and quickly clean and dry pavement cracks, joints and potholes. The more air you provide the better the performance. If you want to properly prepare pavements quickly – choose **LAB Mfg.**

**SPECIFICATIONS:** Detailed specifications available by calling toll-free **800-776-5830**.

### Classic Model B & Hot Shot

Heated Air Temperatures: 400° F to 2600° F

Exit Heated Air: Up to 1000 ft. per second

Propane: 5 to 30 psi

Compressed Air Supply 60 - 100 cfm, 50 - 175 psi (Hot Shot)

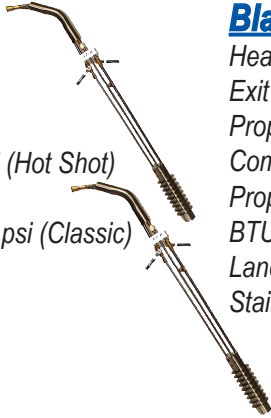
Propane Consumption: 10 Lbs per hour @ 20 psi

100 - 185 cfm, 50 - 175 psi (Classic)

BTU's: to 1,000,000

Lance Weight: 11 Lbs

Stainless Steel Construction



### Blaster Model C

Heated Air Temperatures: 600° F to 3000° F

Exit Heated Air: Up to 3000 ft. per second

Propane: 5 to 30 psi

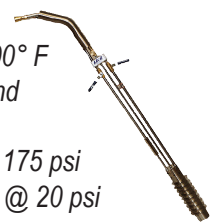
Compressed Air Supply 150 + cfm, 90 - 175 psi

Propane Consumption: 12 Lbs per hour @ 20 psi

BTU's: to 1,500,000

Lance Weight: 12 Lbs

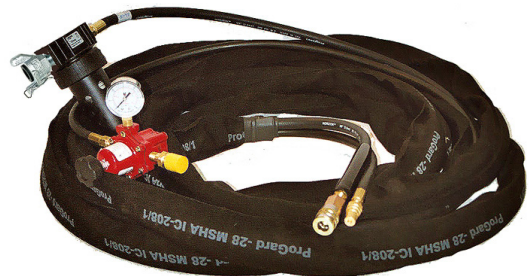
Stainless Steel Construction



LAB is committed to provide our customers with the best Hot Air Lances in the industry. We offer you a complete package which includes everything you need to get started. All that is needed is your compressor and propane supply to begin. All lances are performance tested to insure proper operation prior to shipment.

### Complete Package Includes:

- ◆ Hot Air Lance Unit (Classic, Hot Shot, Blaster)
- ◆ Hose Assembly (40', 50', 60') in protective hose cover
- ◆ Shoulder Strap
- ◆ Heavy Duty Air Filter
- ◆ LP Regulator & Gauge
- ◆ Quick Connect Fittings
- ◆ Safety & Operation Manual
- ◆ Warranty Card



### Heavy Duty Components

### Stinger All In One Portable Heat Lance

A portable crack sealing lance in one package

#### Features:

- Honda GX 5.5 HP Engine
- Electronic Ignition
- Stainless Steel Burner
- Easy to Operate Swivel Rear Wheel
- Lance Assembly Weight 10 Lbs.
- Lance Assembly Length 59"
- Single Stage Compressor
- 42" H x 39" W x 51" L
- Shipping Weight: 280 Lbs.



### CAT Torch Kit

When combined with your air compressor and propane tank, the CAT torch generates high intensity flame output along with a high temperature heat blast to clean and dry any crack in a paved work area. Save money on this lower budget unit.

Torch Kit includes Torch Gas Regulator and 50 ft. LP Gas Hose

#### Features:

- Lightweight Aluminum Body
- Fingertip Control for Air & Fuel
- Includes Propane Hose & Regulator
- Cleans & Dries with High Temperature
- Extends Your Work Season
- BTU Rating – 300,000 @ 55 psi
- Temp Output – 2000-2400 degrees



Agency regulations require eye, hearing and protective clothing during operation.

# The Hottest Thing On The Road

## ◆ Be sure you get the facts

We're honored that you are considering our high performance flame free preparation equipment. LAB prides itself on its patented flame free combustion system. Be sure that you do your research when inquiring about other heat lances. Some claim to be "Flame-Free" but proof is the key. Get a demo of each and witness the difference in LAB heat lances from other "so called" heat lances on the market. You'll be glad you did! Don't get burned by look-a-likes.

## Popular Options:

### Wheel Kit with Debris Guard # WKG

Our most popular option allows the operator to wheel around the lance with minimal effort. Built to withstand extreme use and protects the operator from debris blow back.



### Comfort Handle # HAN

An additional handle is mounted to assist operator with ease of use. Best choice for large pavement defects such as alligatored areas or pothole preparation.



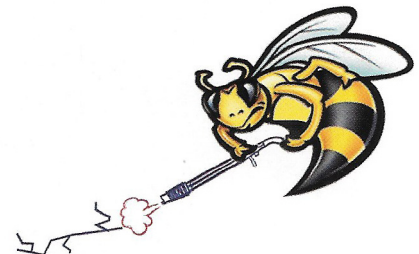
### Ignition System # IGN

Electric push button spark ignitor mounted on lance for quick start up.



## Additional uses for our Heat Lances

- Pothole preparation prior to filling
- Dry pavement surfaces prior to line striping
- Removal of thermoplastic and water based paint
- Remove/re-melt excess sealant material from pavements
- Dry concrete surfaces prior to application of coatings
- Reflector casting removal



(Division of BrewPro Inc.)  
9483 Reading Road  
Cincinnati, OH 45215 USA

HeatLances.com  
sales@HeatLances.com  
513-577-7200